



Edition : 1.0
Date: (11/24)

Instruction Manual

Air/Hydraulic Operation

MOTORCYCLE LIFT TABLE

MLP-454

Order Code: (A3495)



1.0 SAFETY PRECAUTIONS

DO NOT use this machine unless you have been instructed in its safe use and operation and have read and understood this manual. It is the responsibility of the owner to make sure all personnel read this manual prior to using the device. It is also the responsibility of the device owner to keep this manual intact and in a convenient location for all to see and read. If the manual or product labels are lost or not legible, they need to be replaced before operating.

THE NATURE OF HAZARDOUS SITUATIONS WARNING!

The use of a portable motorcycle lifting platform is subject to certain hazards that cannot be prevented by mechanical means, but only by the exercise of intelligence, care, and common sense. It is therefore essential to have owners and personnel involved in the use and operation of the equipment who are careful, competent, trained, and qualified in the safe the operation of the equipment and its proper use. Examples of hazards are dropping, tipping or slipping of loads caused primarily by improperly securing loads, overloading, off-centered loads, use on other than hard level surfaces, and using equipment for a purpose for which it was not designed.

METHODS TO AVOID HAZARDOUS SITUATIONS WARNING!

- Use a qualified person to maintain the lift in good condition. Keep it clean for best and safest performance.
- The maximum load is 454kg. **DO NOT** exceed this rated capacity.
- Use this lift for lifting purpose only. **DO NOT** use it for any other purpose it is not designed to perform.
- Keep children and unauthorized persons away from the work area.
- Remove ill fitting clothing. Remove ties, watches, rings and other loose jewelry, and contain long hair.
- Wear ANSI approved safety goggles when operating the lift.
- Keep proper balance and footing, do not overreach and wear nonskid footwear.
- Only use this lift on a surface that is stable, level, dry and not slippery, and capable of sustaining the load. Keep the surface clean, tidy and free from unrelated materials and ensure that there is adequate lighting.
- Before use check to ensure that all applicable bolts and nuts are firmly tightened.
- Before use stabilize the lift by turning the adjusting screws down so that the castors are raised off the ground.
- Ensure the motorcycle is adequately secured to the platform with appropriate straps before operating.
- When the platform has been raised to the working height, ensure the locking bar is engaged to prevent accidental lowering.
- Before lowering lift ensure that there are no obstructions underneath and that all persons are standing clear.
- Always keep your hands and feet away from moving parts.
- **DO NOT** attempt to transport a load on the lift. The lift must only be used in a static position for lifting and lowering loads. Ensure that the load remains stable at all times.
- **DO NOT** use the lift if damaged, any suspect parts are noted or it has been subjected to a shock load.
- **DO NOT** operate the lift when you are tired or under the influence of alcohol, drugs or any intoxicating medication.
- **DO NOT** allow untrained persons to operate the lift.
- **DO NOT** make any modifications to the lift.
- **DO NOT** expose the lift to rain or any other kind of bad weather.
- If the lift need repairing and/or there are any parts which need to be replaced, have it repaired by authorized technicians and only use the replacement parts supplied by the manufacturer.
- **WARNING:** the warnings, cautions and instructions discussed in this instruction manual cannot cover all possible conditions and situations that may occur. It must be understood by the operator that common sense and caution are factors which cannot be built into this product, but must be supplied by the operator.

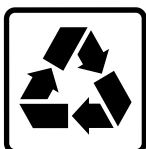
2.0 SPECIFICATIONS

Order Code	A3495
MODEL	MLP-454
Lifting	HYDRAULIC FOOT / AIR OPERATED
Load Capacity	454kg
Platform Length	2200mm overall length
Platform Width	680mm
Platform Height - Minimum to Maximum	150 ~ 770mm
Recommended Air Pressure	108 ~ 125psi
Nett Weight	115kg



WARNING

Always check the capacity of the machine. Exceeding the capacity of the machine may result in sudden breakage that ejects dangerous metal debris at the operator or bystanders



ENVIRONMENT PROTECTION

Recycle unwanted materials instead of disposing of them as waste. All tools, accessories and packaging should be sorted, taken to a recycling centre and disposed of in a manner which is compatible with the environment. When the product becomes completely unserviceable and requires disposal, drain any fluids (if applicable) into approved containers and dispose of the product and fluids according to local regulations.

3.0 ASSEMBLY

- Main Assembly
- Sliding Plate
- Leading Plate
- Vice
- Wheels (Caster & Fixed)
- Lift Foot Pedal
- Release Foot Pedal
- Locking Bar
- Bolts, Washers, Nuts, Cotter Pins

- STEP 1.** Fit the two Caster Wheels (14) to the front of Welded Base (46) using bolts (12), Washers (13), Lock Washers (20) and Nuts (21).
- STEP 2.** Fit the two Fixed Wheels (14) to the rear of Welded Base (46) using Washers (43) and Cotter Pins (31).
- STEP 3.** Place the sliding plate (36) to the platform (35) to cover the rear wheel removal aperture.
- STEP 4.** Attach leading plate (37) to end of platform using washers (23) and R-pins (58).
- STEP 5.** Fit the front wheel vice assembly (50 & 55) to the front of the platform using washers (23) and nuts (30).
- STEP 6.** Fit the baffle plate (32) using bolts (24), washers (23) and nuts (30).
- STEP 7.** Fit the lift foot pedal (11) to the pump piston spindle (09) and fit the release foot pedal (10) to the release valve spindle (05).
- STEP 8.** Fit the four U-Rings (42) to Platform (35) using washers and nuts supplied.

4.0. BEFORE FIRST USE

- 4.1 Leave the pump for one hour to allow the oil to settle before purging the system.

NOTE: Failure to allow sufficient time for the oil to settle could result in air remaining in the oil. In this event, the pump will not purge completely first time and a second purge will be required.

- 4.2 Connect the quick coupler-male into the air supply hose quick coupler-female and fully press the release foot pedal (10), then turn on the air valve (P39) letting the pump work for 20 seconds to eliminate any air in the hydraulic system.
- 4.3 Test the lift, unladen, by raising it to full height and then lowering it. Depress release foot pedal (10) slowly to control the rate of descent.

5.0 OPERATING INSTRUCTIONS

WARNING! Ensure that you read, understand and apply the safety instructions and warnings before use.

WARNING! Do not attempt to overload the lift.

- 5.1 Position the lift in a suitable area, checking that the surface on which the lift will stand is solid and flat.
- 5.2 Turn the adjusting screw assy (18) down to raise the castors off the ground to prevent the lift from moving.

- 5.3 Wheel the motorcycle up the leading plate and onto the platform..

NOTE: There is a choice of mounting holes for the vice to cater for various sizes of motorcycle.

- 5.4 Clamp front wheel in vice to prevent any movement of the motorcycle.
- 5.5 Strap the motorcycle securely to the platform.
- 5.6 Connect the quick coupler-male into the air supply hose quick coupler-female, then turn on the air valve to raise the lift. When air source is not available, pump the lift foot pedal (11) to raise the lift.
- 5.7 When the platform has been raised to the working height, turn off the air valve (or stop pumping) and pass the locking bar (22) through the holes in the front lifting arm (38) so that the lift cannot be inadvertently lowered.
- 5.8 When work is done, check under the lift to ensure that there are no obstructions and that it is safe to lower the unit. Remove the locking bar and then SLOWLY press the release foot pedal to GENTLY lower the lift.

NOTE: The speed of lowering is controlled by the release valve. The more the valve is opened the more rapidly the lift descends. Ensure the decent is slow and controlled.

- 5.9 When the lift is fully lowered, unstrap the motorcycle, open the vice jaws and remove the cycle from the lift.

6.0 MAINTENANCE

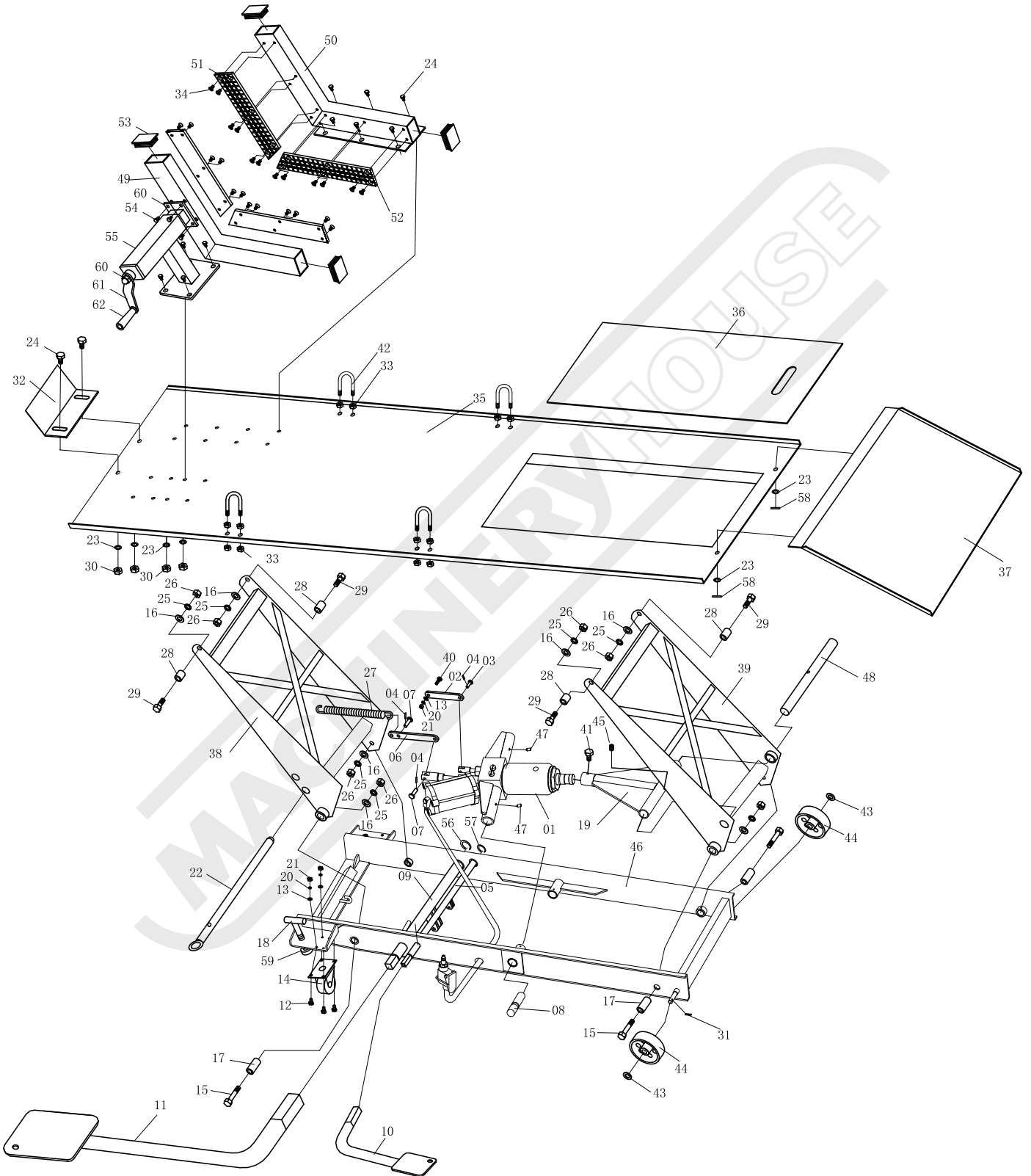
- 6.1 When not in use, the lift must be stowed in the lowest position in a dry location to minimize ram and piston corrosion.
- 6.2 Keep the lift clean and wipe off any oil or grease. Lubricate all moving parts.
- 6.3 Periodically check the ram and piston for signs of corrosion. Clean exposed areas with a clean oiled cloth.
- 6.4 Before each use check all parts. If any part of the lift is damaged or suspect, remove the lift from service and take necessary action to repair.
- 6.5 Check the hydraulic oil level. If not adequate, remove the oil plug (P28) on the pump and add hydraulic oil as necessary. DO NOT use brake fluid or any other improper fluid. Only a good quality hydraulic jack oil can be used.
- 6.6 When lift efficiency drops, purge away air from the hydraulic system as described in 4.2.

PARTS LIST

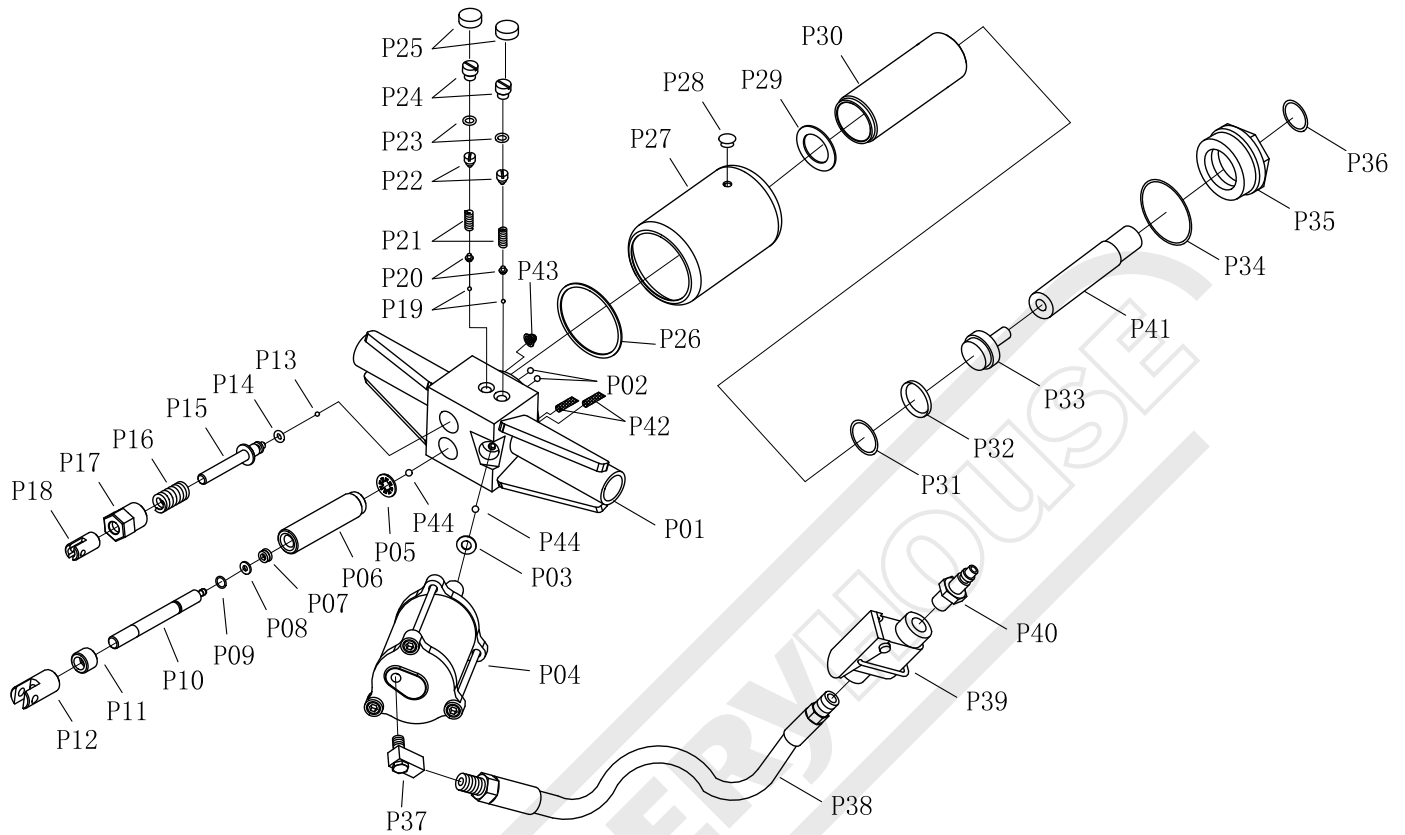
Part No.	Description	Qty
01	Pump	1
02	Release Valve Rod	1
03	Pin	1
04	R-Pin	3
05	Release Valve Axis	1
06	Pump Link	1
07	Pin	2
08	Location Pin	2
09	Lifting Axis	1
10	Foot Pedal For Releasing	1
11	Foot Pedal For Lifting	1
12	Bolt	8
13	Washer	9
14	Caster	2
15	Bolt	4
16	Washer	8
17	Sleeve	4
18	Support	2
19	Saddle	1
20	Lock Washer	9
21	Nut	9
22	Locking Bar	1
23	Washer	15
24	Bolt	12
25	Lock Washer	8
26	Nut	8
27	Spring	1
28	Sleeve	4
29	Bolt	4
30	Nut	12
31	Cotter Pin	2

Part No.	Description	Qty
32	Baffle plate	1
33	Nut	16
34	Screw	24
35	Platform	1
36	Sliding plate	1
37	Lead plate	1
38	Lifting Arm 2	1
39	Lifting Arm 1	1
40	Screw	1
41	Bolt	1
42	U-Ring	4
43	Washer	2
44	Fixed Wheel	2
45	Screw	1
46	Welded base	1
47	Hardware Components	2
48	Pin	1
49	Winch	1
50	Fixed Vice	1
51	Rubber Pad 1	2
52	Rubber Pad 2	2
53	Rubber Plunger	4
54	Bolt	4
55	Location Plate for Active Clamp	1
56	Retainer Ring	2
57	Retainer Ring	2
58	R-Pin	2
59	Round Nut	2
60	Active Clamp	1
61	Wheel clamp rocker arm	1
62	Handle	1

PARTS DIAGRAM



PARTS DIAGRAM & LIST - PUMP



Part No.	Description	Qty
P01	Pump Ass'y	1
P02	Steel Ball	2
P03	Copper Washer	1
P04	Air Pump	1
P05	Copper Washer	1
P06	Pump Core Base	1
P07	Seal Washer	1
P08	Washer	1
P09	O Ring	1
P10	Pump Core	1
P11	Nut	1
P12	Connect Rod	1
P13	Steel Ball	1
P14	O Ring	1
P15	Release Valve	1
P16	Spring	1
P17	Spring Seat	1
P18	Connection Sleeve	1
P19	Steel Ball	2
P20	Steel Ball Seat	2
P21	Spring	2
P22	Screw	2

Part No.	Description	Qty
P23	O Ring	2
P24	Screw	2
P25	Cap	2
P26	Washer	1
P27	Cover	1
P28	Oil Plug	1
P29	Washer	1
P30	Oil Tank	1
P31	O Ring	1
P32	Washer	1
P33	Piston head	1
P34	Nylon Washer	1
P35	Hat	1
P36	O Ring	1
P37	Connector Ass'Y	1
P38	Air Hose	1
P39	Air Valve	1
P40	Hose Connector	1
P41	Piston Rod	1
P42	Oil Filter	2
P43	Filter	1
P44	Steel Ball	2

WARNING

General Machinery Safety Instructions

Machinery House
requires you to read this entire Manual before using this machine.

- 1. Read the entire Manual before starting machinery.** Machinery may cause serious injury if not correctly used.
- 2. Always use correct hearing protection when operating machinery.** Machinery noise may cause permanent hearing damage.
- 3. Machinery must never be used when tired, or under the influence of drugs or alcohol.** When running machinery you must be alert at all times.
- 4. Wear correct Clothing.** At all times remove all loose clothing, necklaces, rings, jewelry, etc. Long hair must be contained in a hair net. Non-slip protective footwear must be worn.
- 5. Always wear correct respirators around fumes or dust when operating machinery.** Machinery fumes & dust can cause serious respiratory illness. Dust extractors must be used where applicable.
- 6. Always wear correct safety glasses.** When machining you must use the correct eye protection to prevent injuring your eyes.
- 7. Keep work clean and make sure you have good lighting.** Cluttered and dark shadows may cause accidents.
- 8. Personnel must be properly trained or well supervised when operating machinery.** Make sure you have clear and safe understanding of the machine you are operating.
- 9. Keep children and visitors away.** Make sure children and visitors are at a safe distance for your work area.
- 10. Keep your workshop childproof.** Use padlocks, Turn off master power switches and remove start switch keys.
- 11. Never leave machine unattended.** Turn power off and wait till machine has come to a complete stop before leaving the machine unattended.
- 12. Make a safe working environment.** Do not use machine in a damp, wet area, or where flammable or noxious fumes may exist.
- 13. Disconnect main power before service machine.** Make sure power switch is in the off position before re-connecting.
- 14. Use correct amperage extension cords.** Undersized extension cords overheat and lose power. Replace extension cords if they become damaged.
- 15. Keep machine well maintained.** Keep blades sharp and clean for best and safest performance. Follow instructions when lubricating and changing accessories.
- 16. Keep machine well guarded.** Make sure guards on machine are in place and are all working correctly.
- 17. Do not overreach.** Keep proper footing and balance at all times.
- 18. Secure workpiece.** Use clamps or a vice to hold the workpiece where practical. Keeping the workpiece secure will free up your hand to operate the machine and will protect hand from injury.
- 19. Check machine over before operating.** Check machine for damaged parts, loose bolts, Keys and wrenches left on machine and any other conditions that may effect the machines operation. Repair and replace damaged parts.
- 20. Use recommended accessories.** Refer to instruction manual or ask correct service officer when using accessories. The use of improper accessories may cause the risk of injury.
- 21. Do not force machinery.** Work at the speed and capacity at which the machine or accessory was designed.
- 22. Use correct lifting practice.** Always use the correct lifting methods when using machinery. Incorrect lifting methods can cause serious injury.
- 23. Lock mobile bases.** Make sure any mobile bases are locked before using machine.
- 24. Allergic reactions.** Certain metal shavings and cutting fluids may cause an allergic reaction in people and animals, especially when cutting as the fumes can be inhaled. Make sure you know what type of metal and cutting fluid you will be exposed to and how to avoid contamination.
- 25. Call for help.** If at any time you experience difficulties, stop the machine and call your nearest branch service department for help.

WARNING

Motorcycle Lifter-Stand Safety Instructions

Machinery House
requires you to read this entire Manual before using this machine.

- 1. Motorcycle Lifter-Stand Condition.** Motorcycle Lifter-Stand must be maintained for a proper working condition. Never operate a Motorcycle Lifter-Stand that has damaged or worn parts. Check the stand, bolts, framework and welds for cracks or damage. Replace if necessary.
- 2. Crushing Hazard.** Never place any part of your body under the Motorcycle Lifter-Stand, or under a lifted load while in operation. Otherwise serious injury can occur.
- 3. Work area hazards.** Pay attention to other persons in the area and know what is going on around the area to ensure unintended accidents.
- 4. Overloading Motorcycle Lifter-Stand.** Do not overload the Motorcycle Lifter-Stands capacity. Always check the weight of the motorcycle before using this Motorcycle Lifter-Stand.
- 5. Warning Labels.** Take note of any warning labels on the Motorcycle Lifter-Stand and do not remove them.
- 6. Level Surface.** Only use this Motorcycle Lifter-Stand on a hard level surface capable of sustaining the combined load.
- 7. Material Hazard.** Do not lift objects that are not recommended for the Motorcycle Lifter-Stand. If they fall serious injury can occur.
- 8. Other Hazards.** Never attempt to start or run the motorcycle on this Motorcycle Lifter-Stand. Never allow children to play on Motorcycle Lifter-Stand while in use or in storage.
- 9. Safe Operation.** Use extreme care when operating this Motorcycle Lifter-Stand. Always position the Motorcycle Lifter-Stand in the correct centered and balanced position under the motorcycles frame. Always support the weight of your motorcycle (Hold onto the handlebars) while operating the foot lever of the Motorcycle Lifter-Stand so that the motorcycle does not fall or slide to one side. If unable to support the motorcycle while using the Motorcycle Lifter-Stand ask someone else to help you support the motorcycle while you operate the Motorcycle Lifter-Stand foot lever. Otherwise serious injury can occur. Leave the Motorcycle Lifter-Stand all the way down when not in use.
- 10. Call for help.** If at any time you experience difficulties, stop and call you nearest branch service department for help.

PLANT SAFETY PROGRAM

NEW MACHINERY HAZARD IDENTIFICATION, ASSESSMENT & CONTROL

Motorcycle Lifter-Stand

Developed in Co-operation Between A.W.I.S.A and Australia Chamber of Manufactures
 This program is based upon the Safe Work Australia, Code of Practice - Managing Risks of Plant in the Workplace (WHSA 2011 No10)

Item No.	Hazard Identification	Hazard Assessment	Risk Control Strategies <small>(Recommended for Purchase / Buyer / User)</small>
B	CRUSHING	HIGH	Ensure Motorcycle Lifter-Stand is on level solid ground. Ensure motorcycle is correctly mounted and in a balanced position before lifting. Keep body parts clear from under motorcycle when mounting and lifting. Do not exceed maximum capacity of Motorcycle Lifter-Stand. Support motorcycle while lifting using the foot lever of the Motorcycle Lifter-Stand. Wear safety boots.
J	SLIPPING, TRIPPING, & FALLING	LOW	Avoid uneven or slippery surfaces when using Motorcycle Lifter-Stand.
Plant Safety Program to be read in conjunction with manufactures instructions			



www.machineryhouse.com.au



www.machineryhouse.co.nz

Authorised and signed by:
 Safety officer:
 Manager:

Revised Date: 18th January 2019



ENVIRONMENT PROTECTION

Recycle unwanted materials instead of disposing of them as waste. All tools, accessories and packaging should be sorted, taken to a recycling centre and disposed of in a manner which is compatible with the environment. When the product becomes completely unserviceable and requires disposal, drain any fluids (if applicable) into approved containers and dispose of the product and fluids according to local regulations.

Imported by

HARE & FORBES
MACHINERYHOUSE

Australian Distributor

Hare & Forbes
Machineryhouse
Sydney - Melbourne
Adelaide - Brisbane - Perth

Ph: 1300 202 200
www.machineryhouse.com.au

MACHINERYHOUSE

New Zealand Distributor

Machineryhouse
Auckland
Christchurch

Ph: 0800 142 326
www.machineryhouse.co.nz